



## Xtore XN WSS Series



DVD image Disc release note: [Version: 1.30A](#)  
([XN-004S](#), [XN-104/108R](#), [XN-212R](#))

DVD image Disc release note: [Version: 1.30B](#)  
([XN-004S](#), [XN-104/108R](#), [XN-212R](#))

DVD image Disc release note: [Version: 1.10A](#)  
([XN-10 Tower 2 bays WSS](#))

### Purpose:

This document describes new features, known issues and their workarounds for Xtore Windows Storage Server 2003 systems; it covers XN-004S-T1x, XN-104R/108R-T2x and XN-212R-T3x, XN-10 models. Any questions or inquires please contact with Xtore Rep. for further information. <http://www.xtore.com>

<b>USA:</b> Tel: 1+ (626) <a href="tel:6265817015">5817015</a> Fax: 1+ (626) <a href="tel:6265817065">5817065</a> E-mail: <a href="mailto:support@xtore.com">support@xtore.com</a>	<b>Japan:</b> Tel: +81-43-2028380 Fax: +81-43-2028381 Email: <a href="mailto:japansales@xtore.com.tw">japansales@xtore.com.tw</a> <b>Taiwan and Asia:</b> Tel: +886-2-29111569 Fax:+886-2-29111695 Email: <a href="mailto:Support@xtore.com.tw">Support@xtore.com.tw</a>	<b>EMEA</b> <a href="tel:+31306386789">Tel: +31-30-6386789</a> <a href="tel:+31306360638">Fax:+31-30-6360638</a> <a href="mailto:Europe@xtore.com">Email: Europe@xtore.com</a>
--	---	---

[For Model: XN-004S-T1x & XN-104R/108R-T2x & XN-212R-T3x & XN-10](#)



<b>REVISION</b>	<b>DATE</b>	<b>CHANGE DESCRIPTION</b>
Version 1.30A	Nov-14th-2005	Initial Release
Version 1.10A	Nov-14 <sup>th</sup> -2005	Initial Release
Version 1.30B	Feb 7 2006	Initial Release



## V1.30A and V1.10A Highlight:

1. **Windows Server 2003 KB files upgraded until Nov-14<sup>th</sup>-2005. (All Models)**
2. **Updated Intel PRO Set v9.2 to v10.1 for currently Application of Ethernet LAN Modules (All Models except for XN-10 series)**
3. **Updated Intel Matrix Storage Console from 5.0 to 5.1RAID management utility (XN-10 series only).**
4. **Registry file modified for Share folders issue. (All Models)**

## WSS2003 KB files updated: (Technical notes available on Microsoft website)

- A. Security Update for Windows Server 2003 (KB896424)
- B. Windows Malicious Software Removal Tool - November 2005 (KB890830)
- C. Security Update for Windows Server 2003 (KB900725)
- D. Security Update for Windows Server 2003 (KB905414)
- E. Security Update for Windows Server 2003 (KB902400)
- F. Security Update for Windows Server 2003 (KB901017)
- G. Security Update for Windows Server 2003 (KB904706)
- H. Cumulative Security Update for Internet Explorer for Windows Server 2003 (KB896688)
- I. Microsoft .NET Framework 2.0: x86 (KB829019)
- J. Security Update for Windows Server 2003 (KB899589)

## Upgraded details:

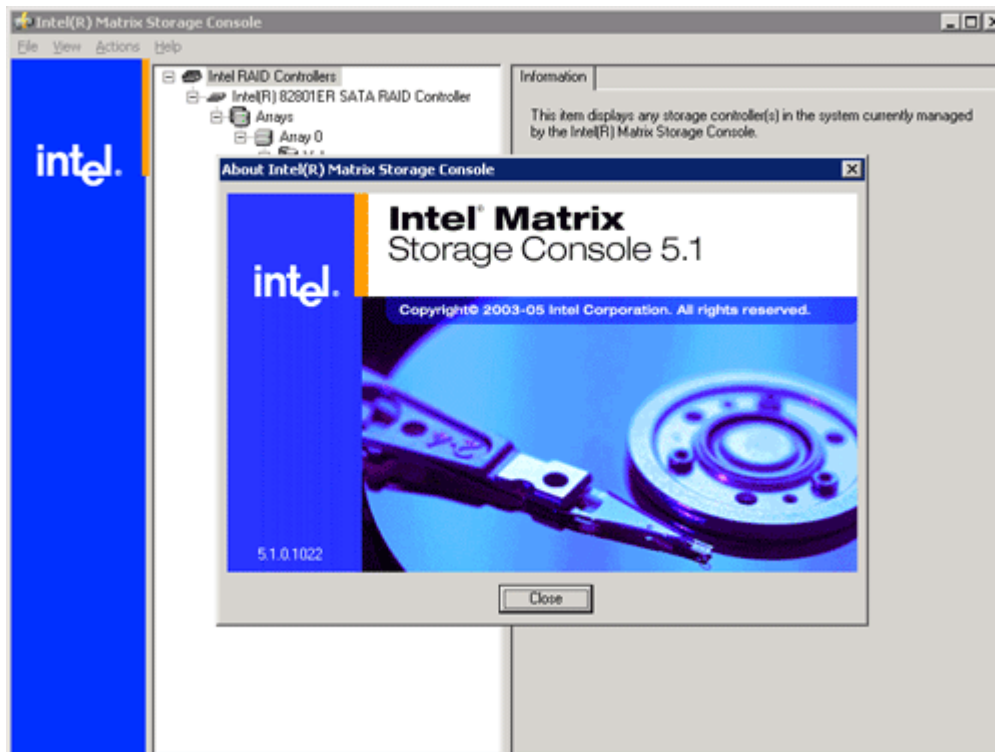
### 1. Intel PRO Set v10.1 Known Issues:

After you have set up your team, Intel® PROSet for Windows\* Device Manager allows you to check your switch for the correct configuration with the Check Switch Configuration button. Please allow a few minutes for the network to register the settings of your team before checking your switch configuration. Checking your switch configuration too quickly may result in a blue screen. Please visit <http://support.intel.com> and check the FAQ's for your adapter model.

### 2. Intel Matrix 5.1 Issues solved: (XN-10 series only)



1. Blue screen seen on Intel(R) 82801GR platform in AHCI mode with Serial ATA hard drive Driver
2. Option ROM will not rebuild a degraded RAID 1 in a matrix RAID configuration Option ROM
3. RAID 1 migration causes Windows\* Event Viewer ID 12: "The device disappeared without first being prepared for removal" Driver
4. Serial ATA hard drives spin up and spin down before suspending Driver\*



### **3. Reg file modified due to some Windows XP SP2 clients could be invisible folders or files during moving to different folder**

The Symptoms will be happened V1.00, V1.10A and 1.20A previously DVD image DISCs  
On the WSS2003 shared folder, user from Windows XP to access the shared folder, to create new folder and new folder 2, and then remove new folder2 to new folder, click new folder, new folder2 will be invisible.

#### **Cause:**

Xtore XN-004S-T1x (Tower 4 bays) XN-104/108R-T2(1U 4/8 bays), XN-212R-T3x (2U 12 bays) DVD image profile V1.10A or V.1.20A and XN-10 ( Tower 2 bays) DVD image 1.00A, the following registry keys have been added in order to optimize NFS service for I/O meter performance :

[HKEY\_LOCAL\_MACHINE\System\CurrentControlSet\Services\LanmanServer\Parameters]



```
"noaliasingonfilesystem"=dword:00000001
```

```
[HKEY_LOCAL_MACHINE\system\CurrentControlSet\Services\Tcpip\Parameters]
```

```
"NumTcbTablePartitions"=dword:00000016
```

### **Resolution:**

To remove the registry keys by "regedit.exe" manually or to run "Del SP1Perf.reg" on the WSS2003 to remove the preloaded impact registry keys

### **The delsp1perf.reg contents:**

Windows Registry Editor Version 5.00

```
[HKEY_LOCAL_MACHINE\System\CurrentControlSet\Services\LanmanServer\Parameters]
```

```
"noaliasingonfilesystem"=dword:0
```

```
[HKEY_LOCAL_MACHINE\system\CurrentControlSet\Services\Tcpip\Parameters]
```

```
"NumTcbTablePartitions"=dword:8
```

## **V1.30B Highlight:**

- 1. User Name Mapping Service issue fixed.**
- 2. Enable the Use Write Cache registry key.**

### **Fixed details:**

#### **1. User Name Mapping Service**

Due to the latest DVD (XN-004/104/108/212R) user name mapping service always hung and stop at the beginning time. When the computer starts, the User name mapping is earlier than NFS service, and then came out an error message.

### **Resolution:**

To change the registry keys by "regedit.exe" manually or to run "userNameMappingFixed.reg" on the WSS2003.

### **The userNameMappingFixed.reg contents:**

Windows Registry Editor Version 5.00

```
[HKEY_LOCAL_MACHINE\SYSTEM\CurrentControlSet\Services\Mapsvc]
```



"DependOnService"=hex(7):4E,00,66,00,73,00,53,00,76,00,72,00,00,00,00,00

## 2. Use Write Cache

To increase write speed for NFS.

### Resolution:

To change the registry keys by "regedit.exe" manually or to run "useWriteCache.reg" on the WSS2003.

### The useWriteCache.reg contents:

Windows Registry Editor Version 5.00

[HKEY\_LOCAL\_MACHINE\SYSTEM\CurrentControlSet\Services\NfsSvr\Parameters]

"UseWriteCache"=dword:1

### More information:

If you have any questions or need additional assistance with this information, please contact with local Xtore products' vendors or mail to: [support@xtore.com.tw](mailto:support@xtore.com.tw)