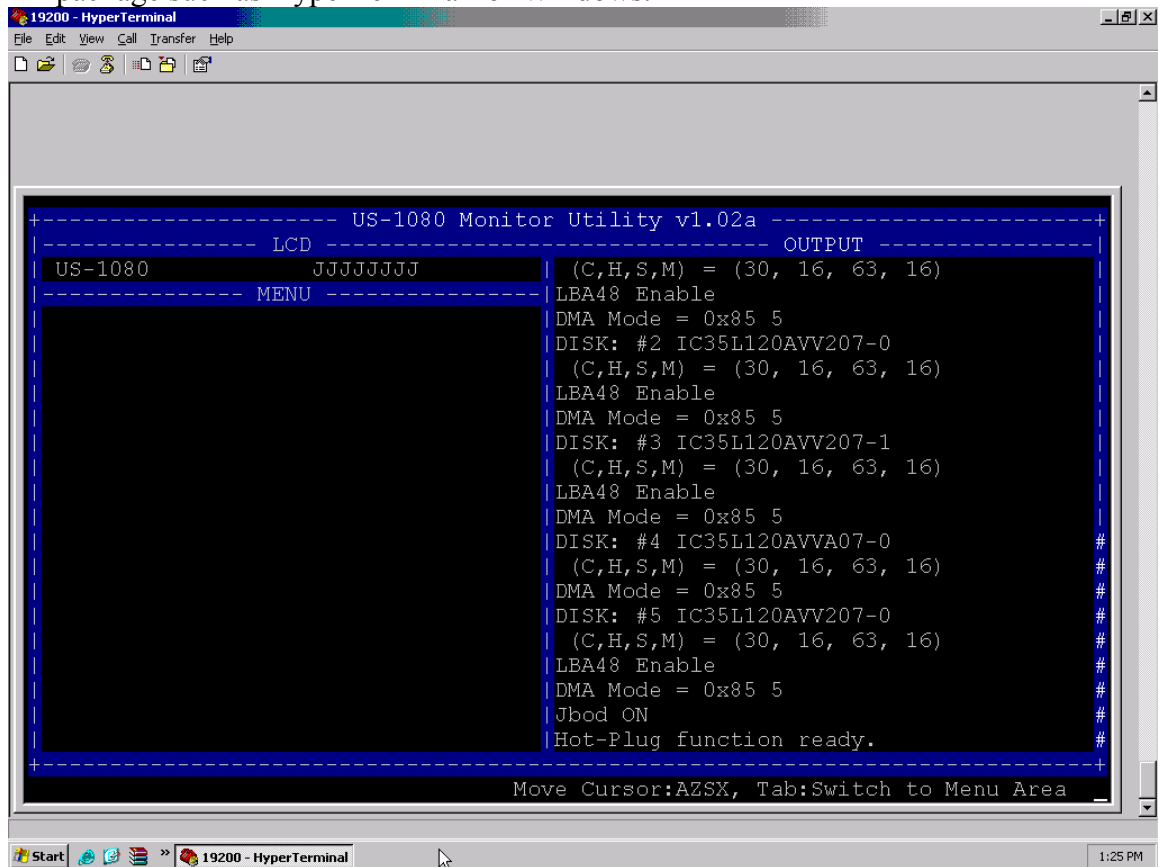


## Steps to upgrade DAS firmware

- 1) Connect to your DAS product through a VT100 communications software package such as HyperTerminal for Windows.



```
----- US-1080 Monitor Utility v1.02a -----
----- LCD -----                               OUTPUT -----
US-1080      JJJJJJJJ      (C,H,S,M) = (30, 16, 63, 16)
----- MENU -----      LBA48 Enable
                        DMA Mode = 0x85 5
                        DISK: #2 IC35L120AVV207-0
                        (C,H,S,M) = (30, 16, 63, 16)
                        LBA48 Enable
                        DMA Mode = 0x85 5
                        DISK: #3 IC35L120AVV207-1
                        (C,H,S,M) = (30, 16, 63, 16)
                        LBA48 Enable
                        DMA Mode = 0x85 5
                        DISK: #4 IC35L120AVVA07-0
                        (C,H,S,M) = (30, 16, 63, 16)
                        DMA Mode = 0x85 5
                        DISK: #5 IC35L120AVV207-0
                        (C,H,S,M) = (30, 16, 63, 16)
                        LBA48 Enable
                        DMA Mode = 0x85 5
                        Jbod ON
                        Hot-Plug function ready.
-----
Move Cursor:AZSX, Tab:Switch to Menu Area
```

## 2) Log in using the special account: specWANG

```
19200 - HyperTerminal
File Edit View Call Transfer Help
Move Cursor:AZSX, Tab:Switch to Menu Area
AZ:Move Cursor, ESC:Exit, Enter:Enter, Tab:Switch to Output Area

----- US-1080 Monitor Utility v1.02a -----
----- LCD ----- OUTPUT -----
US-1080      JJJJJJJJ      (C,H,S,M) = (30, 16, 63, 16)
----- MENU -----      LBA48 Enable
                        DMA Mode = 0x85 5
                        DISK: #2 IC35L120AVV207-0
                        (C,H,S,M) = (30, 16, 63, 16)
                        LBA48 Enable
                        DMA Mode = 0x85 5
                        DISK: #3 IC35L120AVV207-1
                        (C,H,S,M) = (30, 16, 63, 16)
                        LBA48 Enable
                        DMA Mode = 0x85 5
                        DISK: #4 IC35L120AVVA07-0
                        (C,H,S,M) = (30, 16, 63, 16)
                        DMA Mode = 0x85 5
                        DISK: #5 IC35L120AVV207-0
                        (C,H,S,M) = (30, 16, 63, 16)
                        LBA48 Enable
                        DMA Mode = 0x85 5
                        Jbod ON
                        Hot-Plug function ready.

Please input key: ' '..' '
```

Connected 0:01:57 ANSIW 19200 8-N-1 SCROLL CAPS NUM Capture Print echo

19200 - HyperTerminal 1:26 PM

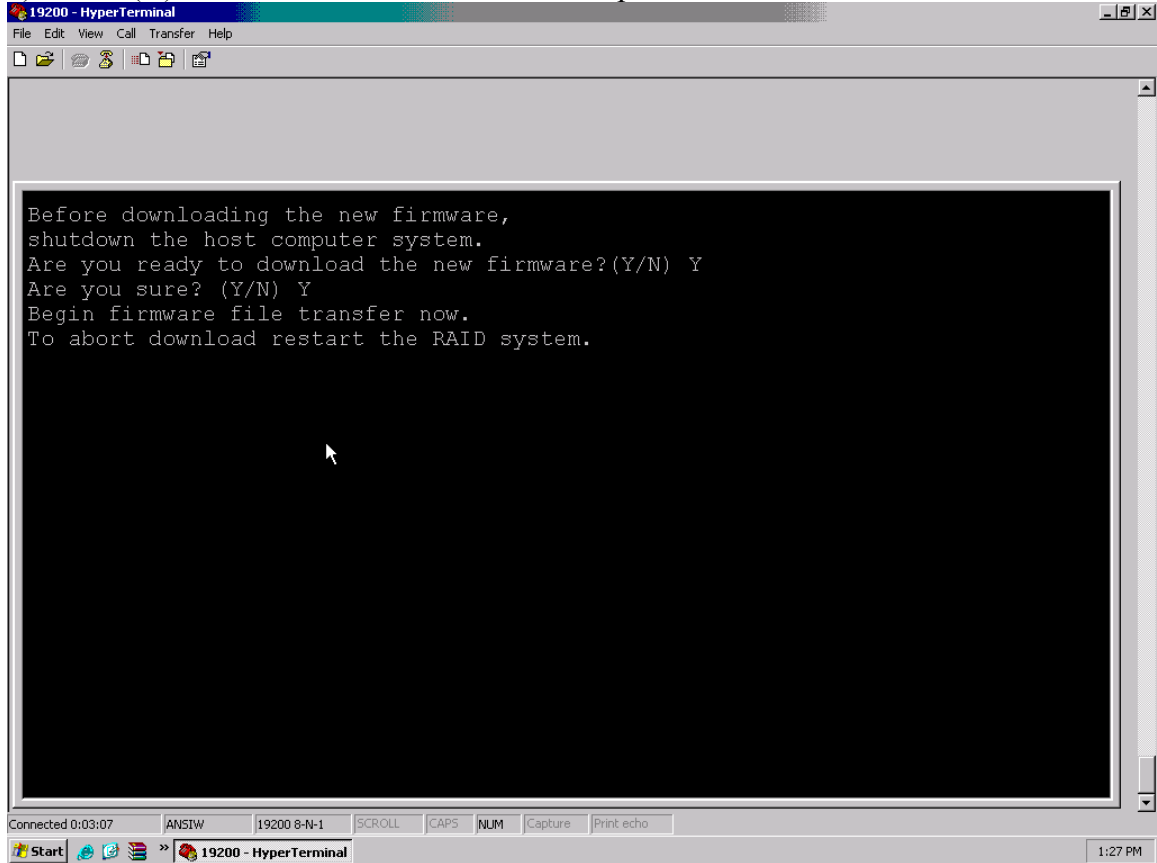
### 3) Navigate through the menu to RAID FUNCS → UPDATE ROM

```
19200 - HyperTerminal
File Edit View Call Transfer Help
Move Cursor:AZSX, Tab:Switch to Menu Area
AZ:Move Cursor, ESC:Exit, Enter:Enter, Tab:Switch to Output Area
Please input key: '.'

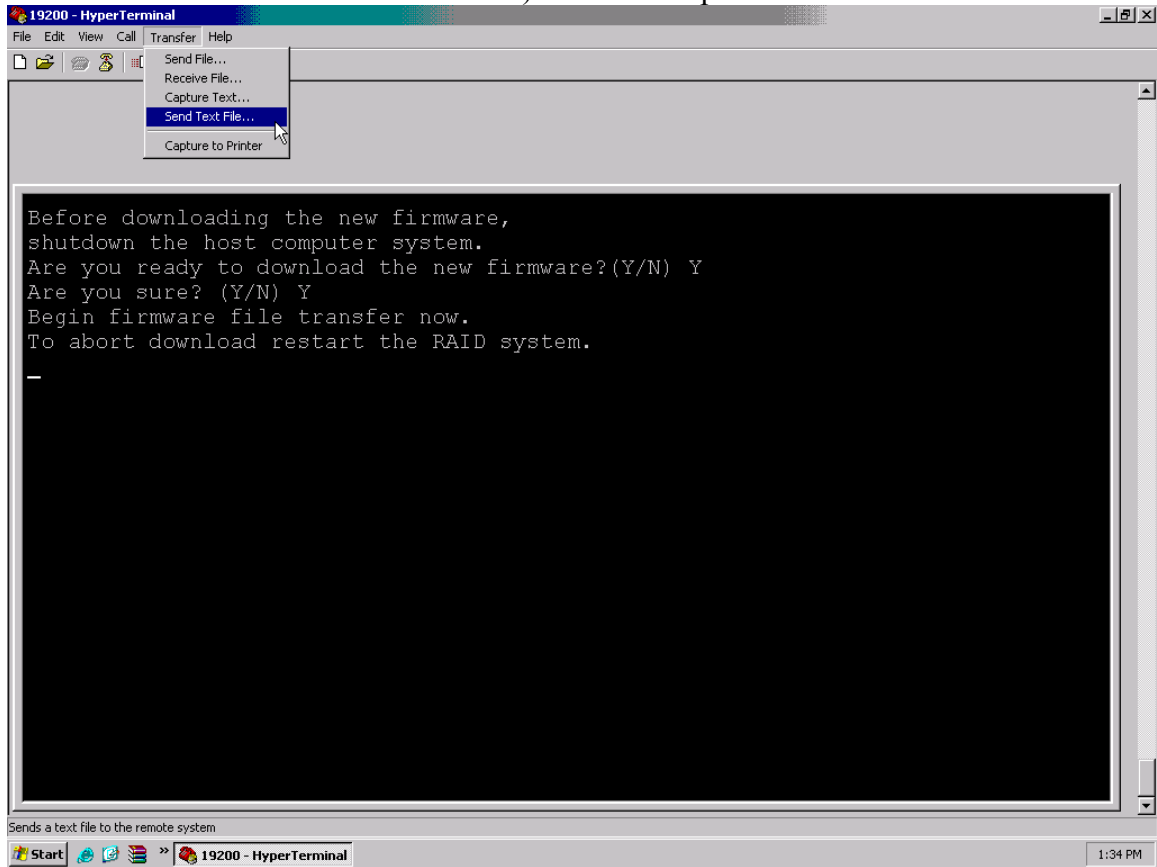
----- US-1080 Monitor Utility v1.02a -----
----- LCD ----- OUTPUT -----
US-1080          JJJJJJJJ          (C,H,S,M) = (30, 16, 63, 16)
----- MENU -----          LBA48 Enable
+---Main Menu---+          DMA Mode = 0x85 5
|0 Quick Setup |          DISK: #2 IC35L120AVV207-0
|1 RAID Params |          (C,H,S,M) = (30, 16, 63, 16)
|2 FIBRE Params |          LBA48 Enable
|3 RS232 Params |          DMA Mode = 0x85 5
|4 System Params |          DISK: #3 IC35L120AVV207-1
|5 NVRAM |          (C,H,S,M) = (30, 16, 63, 16)
|6 RAID Funcs |          LBA48 Enable
|7 +--RAID Funcs---+          DMA Mode = 0x85 5
+---|61 Init R5/R3 |          DISK: #4 IC35L120AVVA07-0
|62 R5/R3 Check |          (C,H,S,M) = (30, 16, 63, 16)
|63 Beeper |          DMA Mode = 0x85 5
|64 Add Disk |          DISK: #5 IC35L120AVV207-0
|65 Remove Disk |          (C,H,S,M) = (30, 16, 63, 16)
|66 Statistic |          LBA48 Enable
|67 Expand Array|          DMA Mode = 0x85 5
|68 Update ROM |          Jbod ON
+---+          Hot-Plug function ready.
-----+-----

AZ:Move Cursor, ESC:Exit, Enter:Enter, Tab:Switch to Output Area
Connected 0:02:21 ANSIW 19200 8-N-1 SCROLL CAPS NUM Capture Print echo
19200 - HyperTerminal 1:26 PM
```

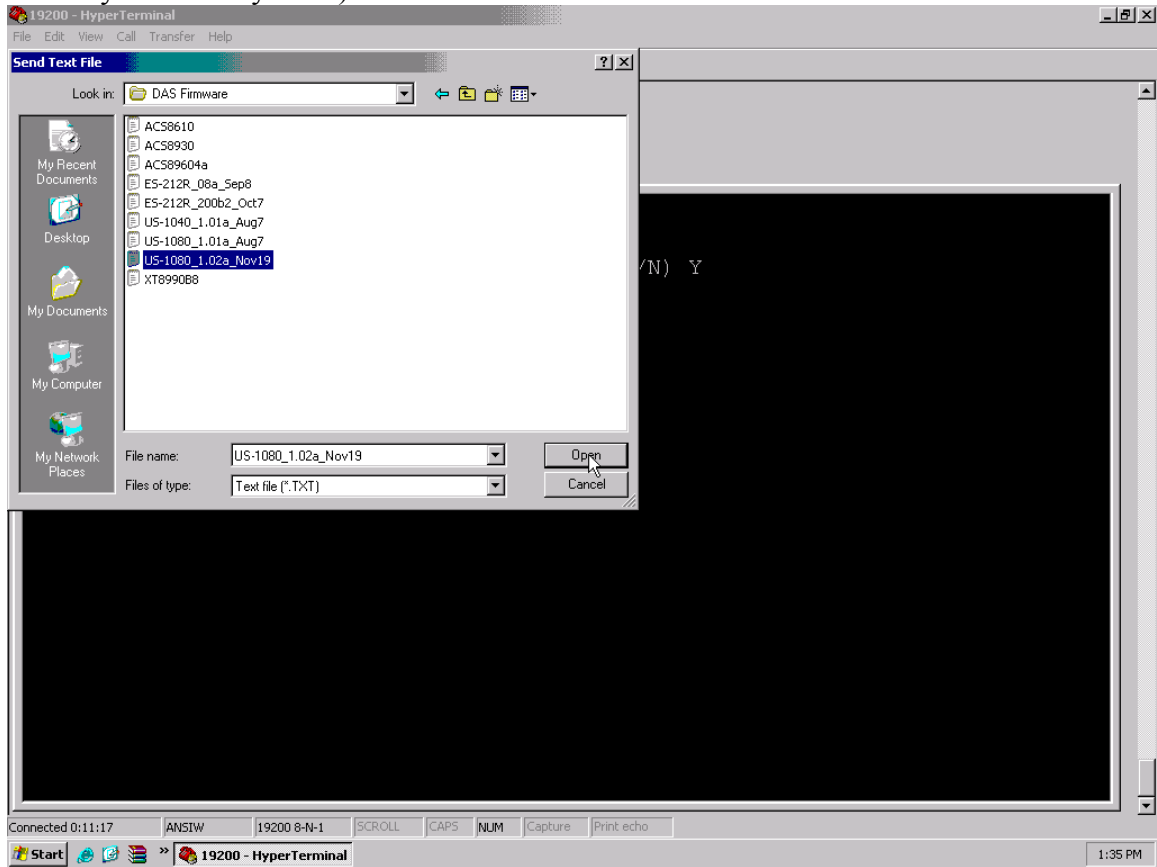
4) Press (Y)es twice to confirm the firmware update.



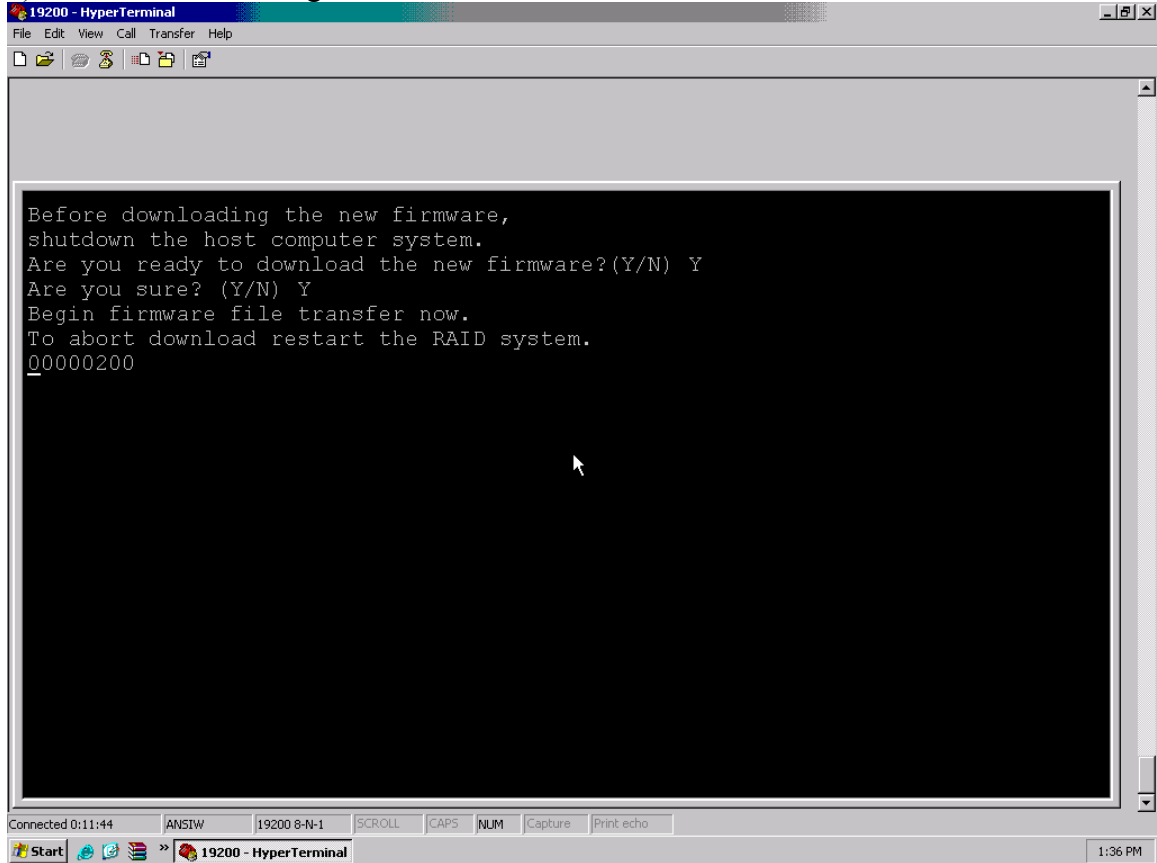
- 5) In your terminal program send (upload) text file. (In Hyperterm Choose TRANSFER → SEND TEXT FILE ) from the dropdown toolbar.



- 6) Select the correct firmware version file. (It is important to select the correct file for your DAS system!)



## 7) File transfer will begin .



The image shows a HyperTerminal window titled "19200 - HyperTerminal". The window contains a text-based interface with the following text:

```
Before downloading the new firmware,  
shutdown the host computer system.  
Are you ready to download the new firmware?(Y/N) Y  
Are you sure? (Y/N) Y  
Begin firmware file transfer now.  
To abort download restart the RAID system.  
00000200
```

The window also displays a status bar at the bottom with the following information:

- Connected 0:11:44
- ANSIW
- 19200 8-N-1
- SCROLL
- CAPS
- NUM
- Capture
- Print echo
- 19200 - HyperTerminal
- 1:36 PM

- 8) After file transfer to the DAS is completed, you will receive a message stating that the File transfer is complete. You will then be given a checksum, and will be asked to enter "GO" to update the firmware.

```
19200 - HyperTerminal
File Edit View Call Transfer Help
Before downloading the new firmware,
shutdown the host computer system.
Are you ready to download the new firmware?(Y/N) Y
Are you sure? (Y/N) Y
Begin firmware file transfer now.
To abort download restart the RAID system.
000C7400
File transfer complete.
Checksum = 0xC005 : OK.
New firmware transfer complete.
Enter 'Go' to update the firmware. _
Start 19200 - HyperTerminal 1:55 PM
```

9) Upon completion of the firmware update, you will be taken back to the MAIN MENU.

```
----- US-1080 Monitor Utility v1.02a -----
----- LCD -----                               ----- OUTPUT -----
US-1080      JJJJJJJJ                            DMA Mode = 0x85 5
----- MENU -----                            DISK: #4 IC35L120AVVA07-0
                                                (C,H,S,M) = (30, 16, 63, 16)
                                                DMA Mode = 0x85 5
                                                DISK: #6 IC35L120AVV207-0
                                                (C,H,S,M) = (30, 16, 63, 16)
                                                LBA48 Enable
                                                DMA Mode = 0x85 5
                                                DISK: #8 IC35L120AVVA07-0
                                                (C,H,S,M) = (30, 16, 63, 16)
                                                DMA Mode = 0x85 5
                                                DISK: #1 IC35L120AVVA07-0
                                                (C,H,S,M) = (30, 16, 63, 16)
                                                DMA Mode = 0x85 5
                                                DISK: #3 IC35L120AVV207-1
                                                (C,H,S,M) = (30, 16, 63, 16)
                                                LBA48 Enable
                                                DMA Mode = 0x85 5
                                                Jbod ON
                                                Hot-Plug function ready.
-----
Move Cursor:AZSX, Tab:Switch to Menu Area
```