



For more information visit our website
www.xtore.com



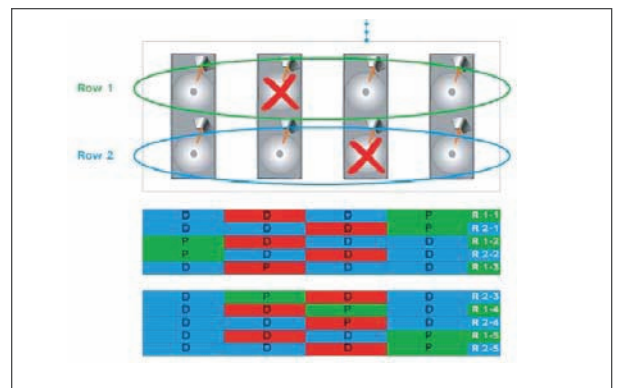
XD 2000 Fibre Channel SAS/SATA RAID

Introducing Xtore's High Performance, High Density, Scalability
 SAS-SAS/SATA and FC-SAS/SATA RAID storage subsystem

XD2000 is a next generation Active-Active Redundant RAID Storage System designed to address a broad range of direct-attached and network storage applications. XD2000 is modular and scalable from enterprise to midrange and small business environments. Providing smart QOS storage configuration, XD2000 is the best solution for tiered storage implementation.

Unique Multi-Drive Failure Tolerant RAID 50i

RAID 50 Interleave is to provide higher redundancy and availability even when using near-line and Desktop drives in tiered storage configurations. RAID 50i transparently creates multiple RAID 5 drive strata within a single RAID set across single or multiple enclosures within the Storage Domain. RAID 50i allows multiple drive failures, up to one drive failure per stratum, without the overhead and performance penalties of RAID 6.



KEY FEATURES & BENEFITS

▲ Unique RAID 50 Interleave plus RAID 0, 1, 5, and 6

- Multi-Drive Failure Tolerant
- Drive Labeling
- Partial Rebuild & Spare Rebuild Caching

▲ Dual Active Controller Blades

- Dual 4Gb FC or SAS 4x Host Channels (per blade)
- Mixed SAS & SATA RAID Sets
- Auto detect Drive type and QOS label
- Storage Domain Wide Drive roaming
- Online RAID Remapping & Recovery

▲ High Scalable Capacity

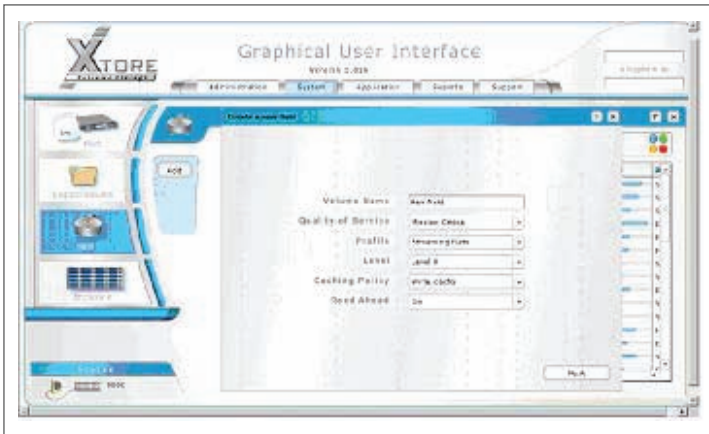
- SAS 4x Expansion for Capacity Expansion (per blade)

▲ Logical Volume Virtualized Storage

- Instant Volume Availability
- Online Volume Resize
- Host Mapping & Masking



XD 2000 Fibre Channel SAS/SATA RAID



▲ Easy Management

- Advanced Web GUI Management
- Usage Log and Report
- Status Monitoring
- On-line firmware upgrade

▲ High Reliability

- Redundant Active-Active Controller Blade
- Redundant High Efficient (85%) Single Rail PSU
- Cable-less Design for Maximum Reliability
- Hot Swap Power Supplies and Blowers
- Optional Battery Backup Support

SPECIFICATIONS

Model Name	XD-SA13-316R	XD-SA26-316R	XD-FA13-316R	XD-FA26-316R
Form Factor	3U 16 bays			
Drive Interface	3.5" 10K or 15K RPM SAS 3G or SATA II			
Controller Blade	SAS, Single	SAS, Dual Active	Fibre, Single	Fibre, Dual Active
Host Interface per Controller	Dual 4x SAS 3G, SFF 8088 miniSAS connectors		Dual FC 4G, SFF LC connectors	
Expansion Interface per Controller	SAS 3G, SFF8088 miniSAS 4x connectors			
Maximum Memory	2GB per controller			
Management	Gb Ethernet, WebTH TP, In-band SES II, SMTP			
RAID support	0, 1, 10, 5, 6, 50i			
Logical Volume Features	64 LVs per Storage Domain, 16 RAID sets per volume On-line LV Resizing, Host Masking and mapping, Drive roaming			
Status Indication	HDD Activity/Fail, Controller Fail, Rear 7-Seg status display			
Power Module	High Efficiency 500W Single Rail PSU, 1+1 Redundancy AC90-264V			
Cooling	Blowers x 3, Axial Fan Module x 1, Optional BBU inside the Axial Fan Module			
Dimension	442mm (W) x 476mm (D) x 132.5mm (H)			
Operating Environment: Operating Temperature:	0~40°C			
Warranty	3 years			
Certification Compliance	FCC Class A, VCCI, BSMI, CE, UL, CSA			

Contact Us:

Xtore USA:
Phone: +1-626-581-4300
Email: sales@xtore.com

Xtore Taiwan:
Phone: +886-3-313-1618
Email: sales@xtore.com.tw

Xtore Japan:
Phone: +81-43-202-8380
Email: jsales@xtore.jp

Xtore Europe:
Phone: +31-30-6386789
Email: sales@xtore.nl