



Xtore WSS Software Upgrade Guide

Date: Sep. 03, 2004

Xtore has developed proprietary software to enhance WSS features listed in the below table.

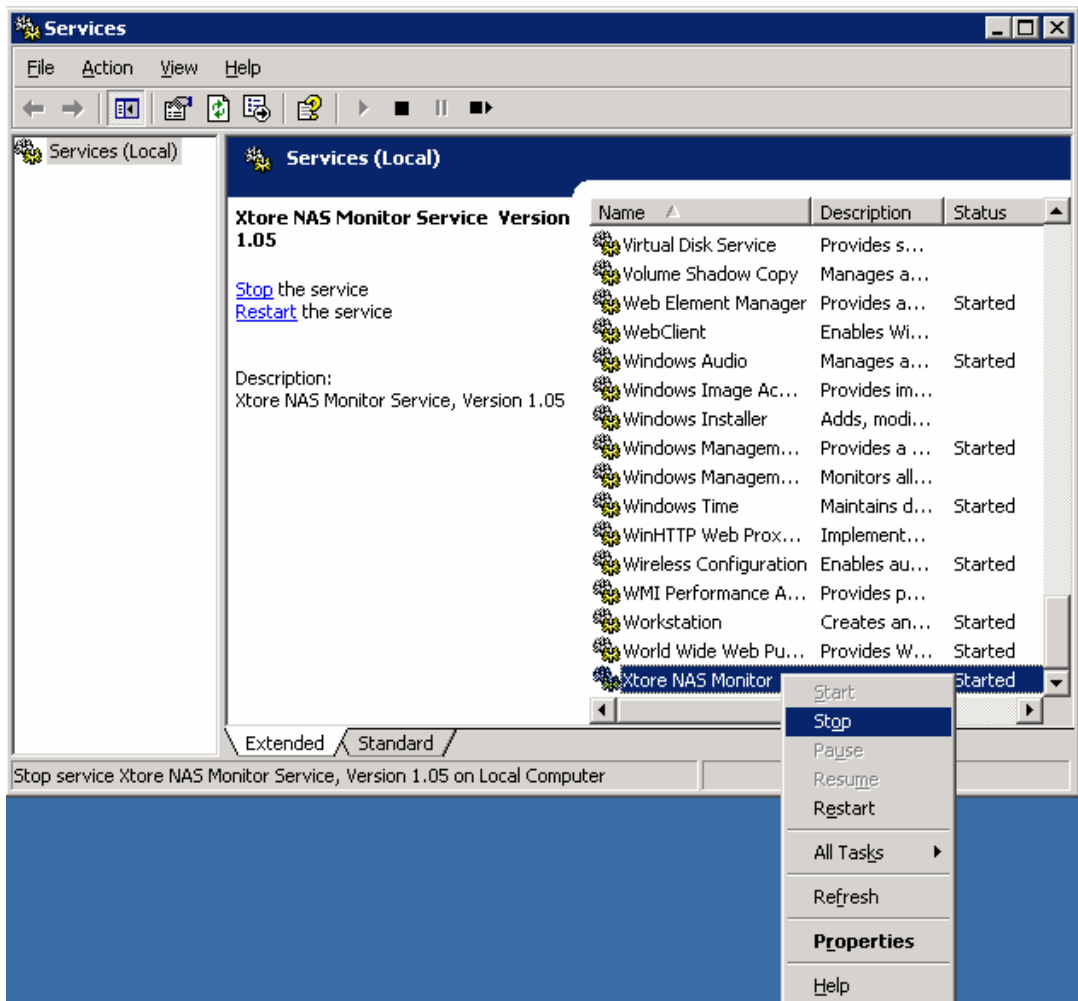
Software	Functions	Applicable models
(A) Status Monitor	<ul style="list-style-type: none">■ Environment Status Monitor: Power Supply, Fan, CPU Temperature■ LCD/Keypad helps setup and status display■ LED indication of hardware status: HDD, System Status	<ol style="list-style-type: none">1. XN-004S-T1 Series2. XN-104R-T2 Series3. XN-108R-T2 Series4. XN-212R-T3 Series
(B) Watchdog Timer	Automatic booting failover of OS partitions	<ol style="list-style-type: none">1. XN-104R-T2 Series2. XN-108R-T2 Series

This Upgrade Guide provides instructions to perform software upgrade.

(A) Status Monitor software upgrade procedures

After getting the latest Status Monitor software either from Xtore web or your sales representative, please perform the following steps.

1. Stop “**Xtore NAS Monitor Service**”
 - 1.1 Run **Remote Desktop** to login the WSS as an administrator.
 - 1.2 Click **Start, Administrative tools, Services**
 - 1.3 Under the **Name** column, find the “**Xtore NAS Monitor Service**”, it should be the last one.
 - 1.4 The current status of “**Xtore NAS Monitor Service**” is **Started**, right click it to select **Stop**.



2. Copy the "nas_mon.exe" file to the directory "C:\WINDOWS\nas_mon", select **Yes** to confirm file replace.
3. To remove previous version of the service, click **Start**, and then click **Run**. Type "`c:\windows\nas_mon\nas_mon.exe -d`" in the Open box, and click **OK**.
4. To install (or upgrade) the latest version of the service, click **Start**, and then click **Run**. Type "`c:\windows\nas_mon\nas_mon.exe -i`" in the Open box, and click **OK**.
5. To start the service, repeat step 1 but select **Restart** at step 1.4.



(B) Watchdog Driver upgrade procedures

NOTE: 1. Only applicable to XN-104R-T2 Series and XN-108R-T2 Series.

2. If you have disabled the watchdog timer in the BIOS setting, you need to enable it first.

3. Rebooting the WSS is necessary for updated driver to take effect.

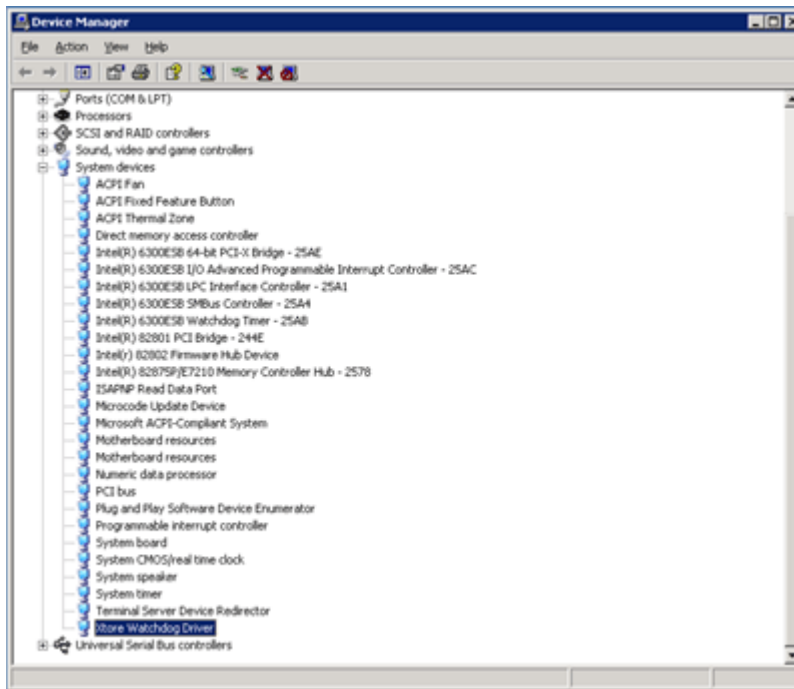
To update the "Xtore Watchdog Driver", please perform the following steps.

0. Get the latest files of "genport.sys" and "genport.inf".

1. Run **Remote Desktop** to login the WSS as an administrator.

2. Copy those files to the directory **c:\windows\inas_mon**.

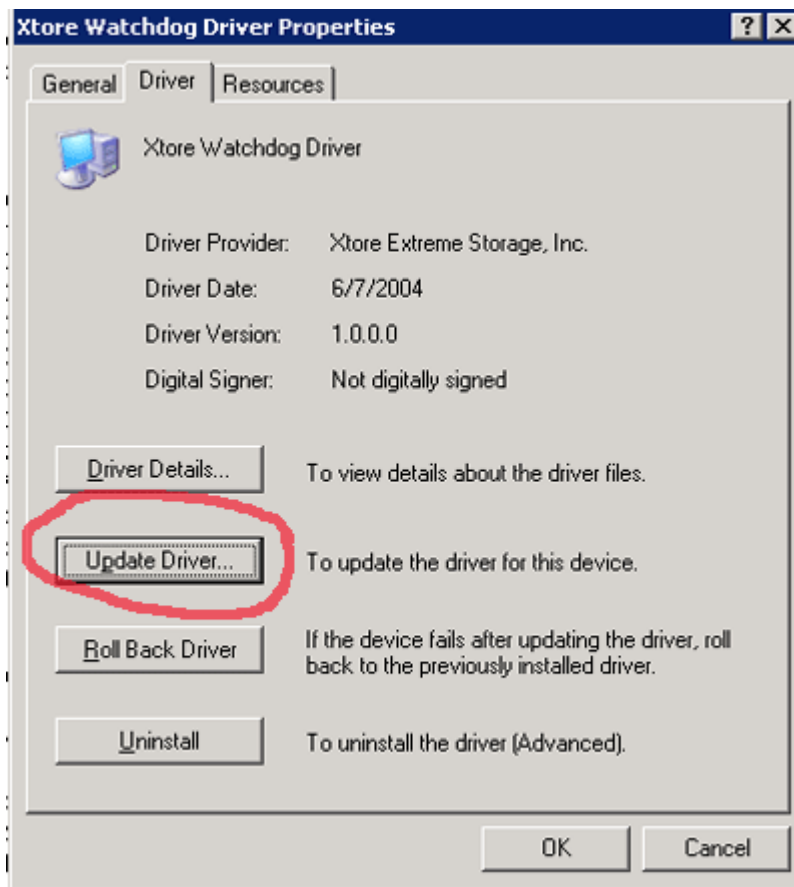
3. Click **Start, Control Panel, System**, the **Hardware** tab, click the **Device Manager** button, and then click the **+** next to the **System devices** to expand the list.



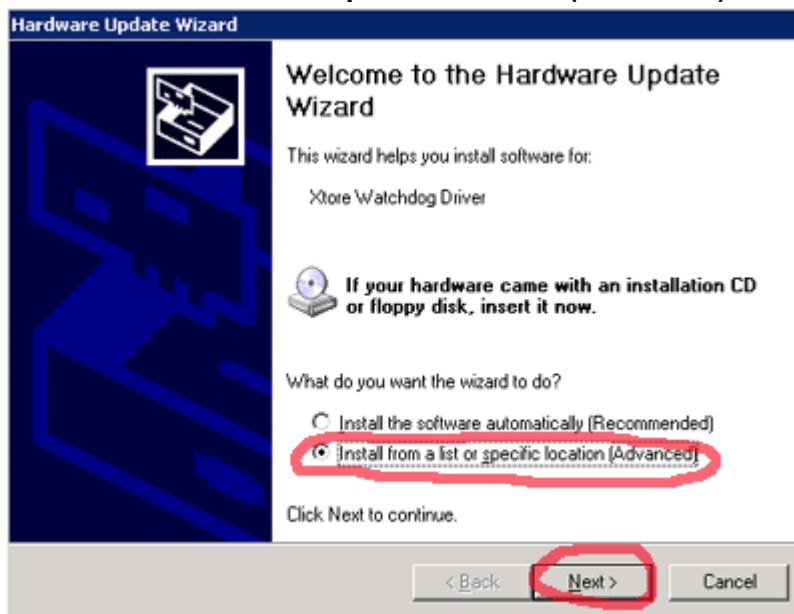
4. You can find the "**Xtore Watchdog Driver**" as the last one, double click it.

5. Select the **Driver** tab.

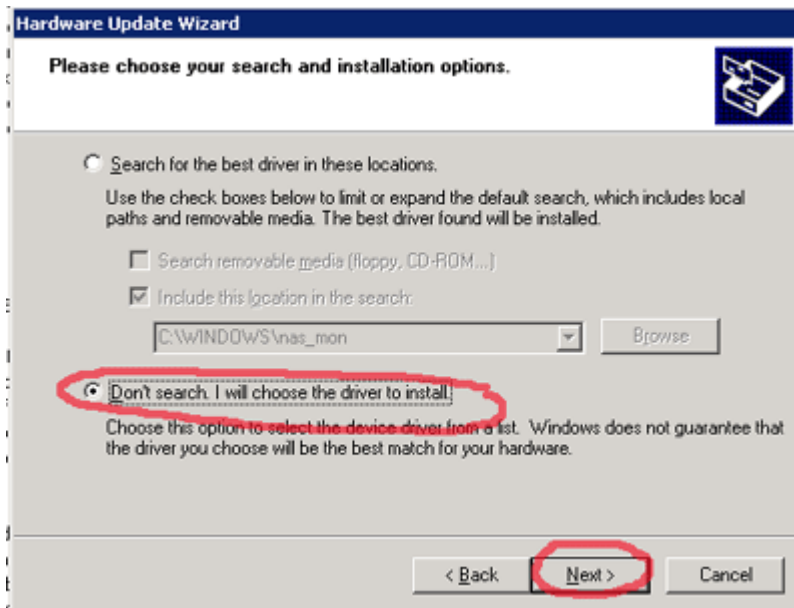
6. Click the **Update Driver** button to start Hardware Update Wizard.



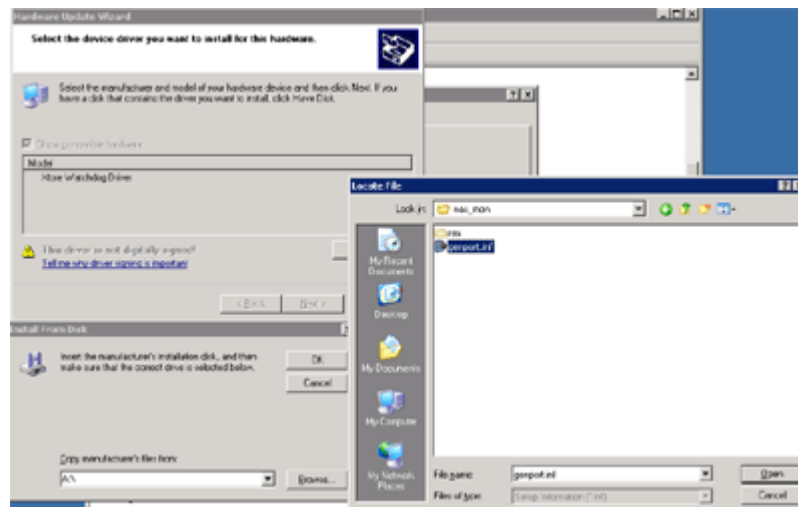
7. Select the item **Install from a list or specific location (Advanced)**, and then click **Next**.



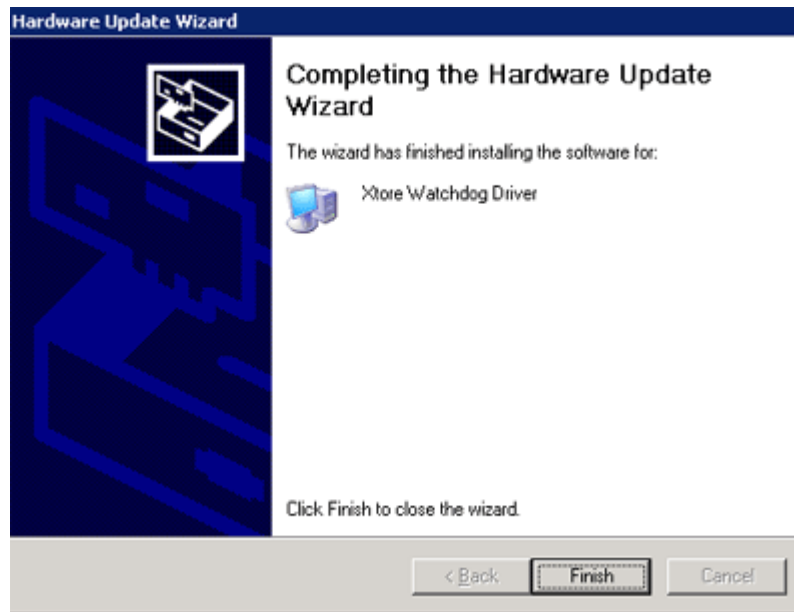
8. Select the item **Don't search, I will choose the driver to install**, and then click **Next**.



9. Select the **Have Disk** button, and then click the **Browse** button to locate file under the directory "**c:\windows\nas_mon**".



10. Select the file "**genport.inf**", and then click the **Open** button.
11. Click **OK** to Install From Disk.
12. Click "**Xtore Watchdog Service**" to select it, and then click **Next**.
13. Click **Yes** to install this driver software.
14. Click **Finish** to finalize the updating steps.



15. Reboot the WSS for updated driver to take effect.