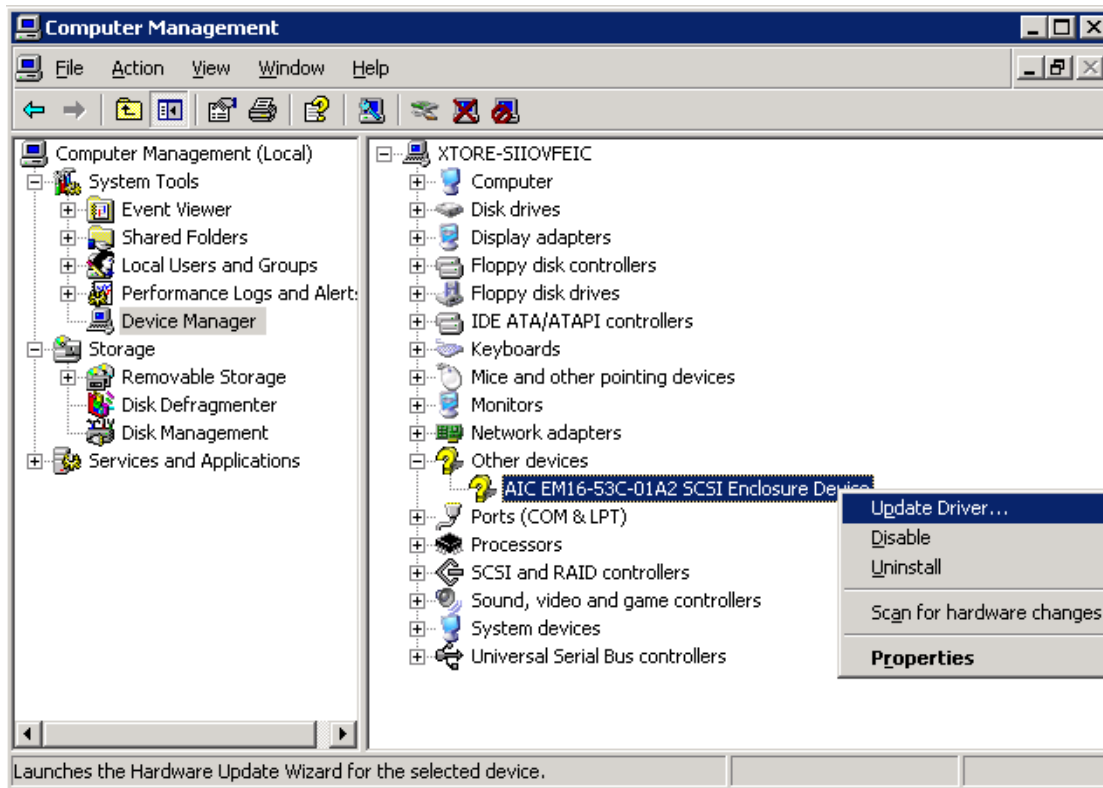
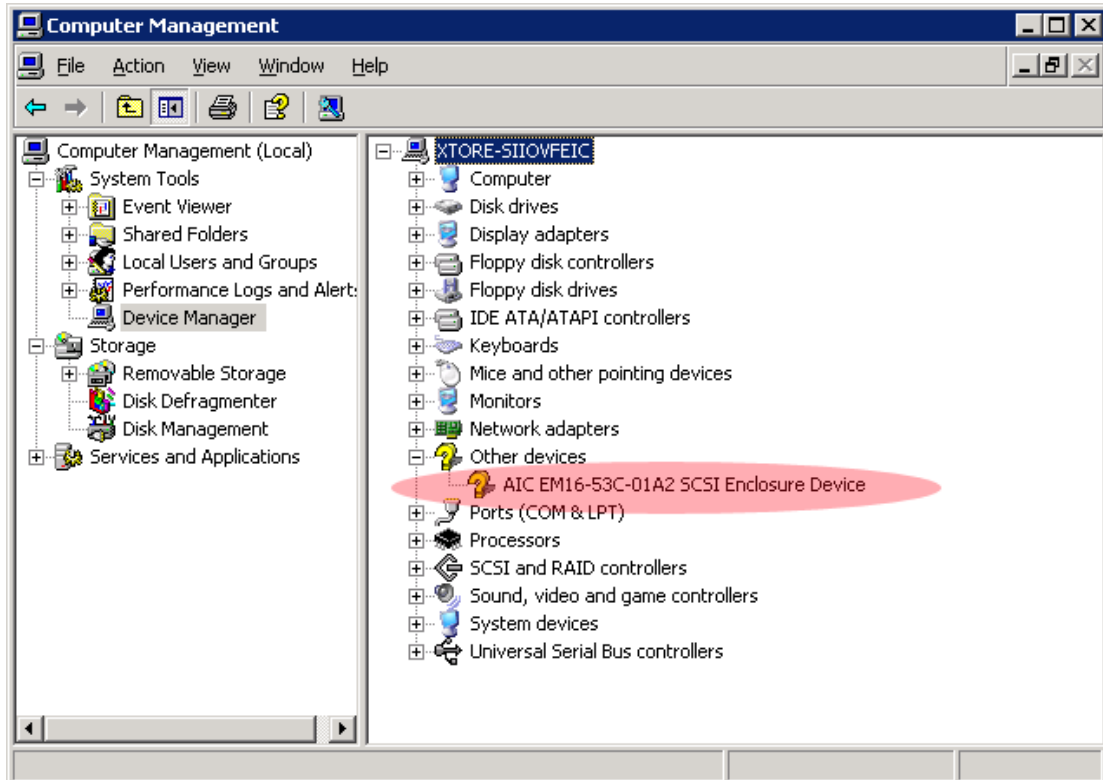


Vitesse.inf drive installation steps on Windows2003



Hardware Update Wizard



Welcome to the Hardware Update Wizard

Windows will search for current and updated software by looking on your computer, on the hardware installation CD, or on the Windows Update Web site (with your permission).

[Online privacy information](#)

Can Windows connect to Windows Update to search for software?

- Yes, this time only
- Yes, now and every time I connect a device
- No, not this time

Click Next to continue.

< Back

Next >

Cancel

Hardware Update Wizard



This wizard helps you install software for:

AIC EM16-53C-01A2 SCSI Enclosure Device



If your hardware came with an installation CD or floppy disk, insert it now.

What do you want the wizard to do?

- Install the software automatically (Recommended)
- Install from a list or specific location (Advanced)

Click Next to continue.

< Back

Next >

Cancel

Hardware Update Wizard

Please choose your search and installation options.



Search for the best driver in these locations.

Use the check boxes below to limit or expand the default search, which includes local paths and removable media. The best driver found will be installed.

Search removable media (floppy, CD-ROM...)

Include this location in the search:

E:\Documents and Settings\Administrator\Desktop\

Browse

Don't search. I will choose the driver to install.

Choose this option to select the device driver from a list. Windows does not guarantee that the driver you choose will be the best match for your hardware.

< Back

Next >

Cancel

Hardware Update Wizard

Hardware Type.



Select a hardware type, and then click Next.

Common hardware types:

- Processors
- SBP2 IEEE 1394 Devices
- SCSI and RAID controllers**
- Security Accelerators
- Smart card readers
- Sound, video and game controllers
- Storage volume shadow copies
- Storage volumes
- System devices

< Back

Next >

Cancel

Hardware Update Wizard

Select the device driver you want to install for this hardware.



Select the manufacturer and model of your hardware device and then click Next. If you have a disk that contains the driver you want to install, click Have Disk.

Manufacturer	Model
Adaptec	Adaptec 2000S Ultra160 SCSI RAID Controller
Agilent	Adaptec 2000S Ultra3
American Megatrends Inc.	Adaptec 2005S Ultra3
Compaq	Adaptec 2010S Ultra320
Dell	
Emulex	

This driver is digitally signed.
[Tell me why driver signing is important](#)

Have Disk...

< Back

Next >

Cancel

Hardware Update Wizard

Select the device driver you want to install for this hardware.



Install From Disk



Insert the manufacturer's installation disk, and then make sure that the correct drive is selected below.

OK

Cancel

Ma
Ad.
Agi
Am
Co
De
Em

Copy manufacturer's files from:



Browse...

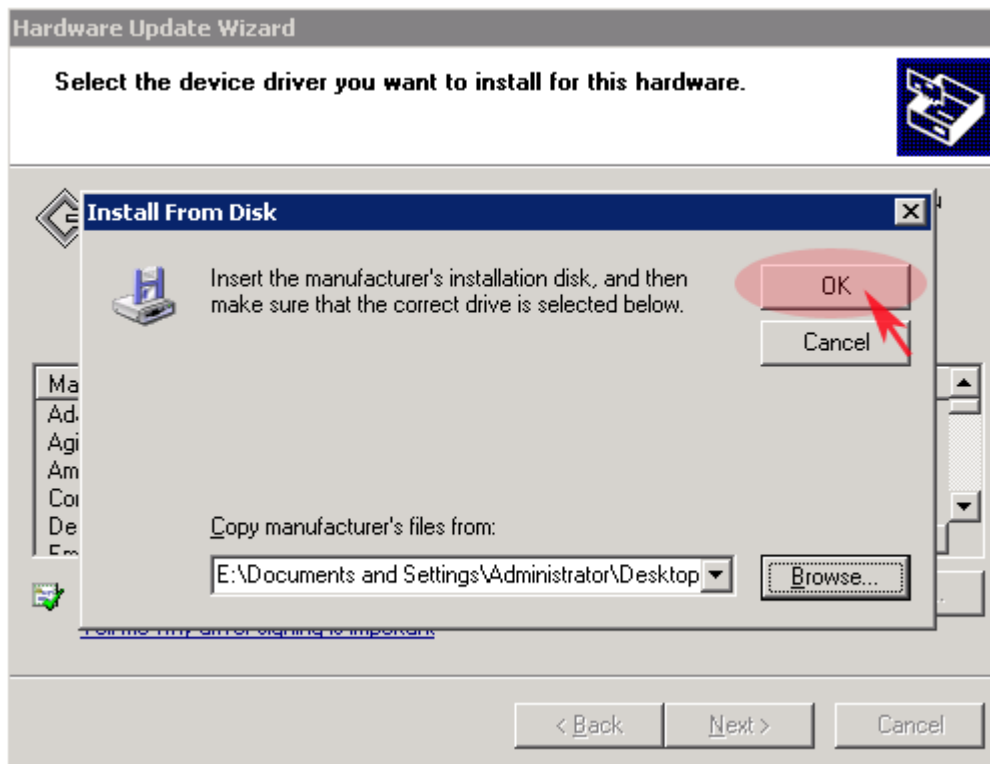
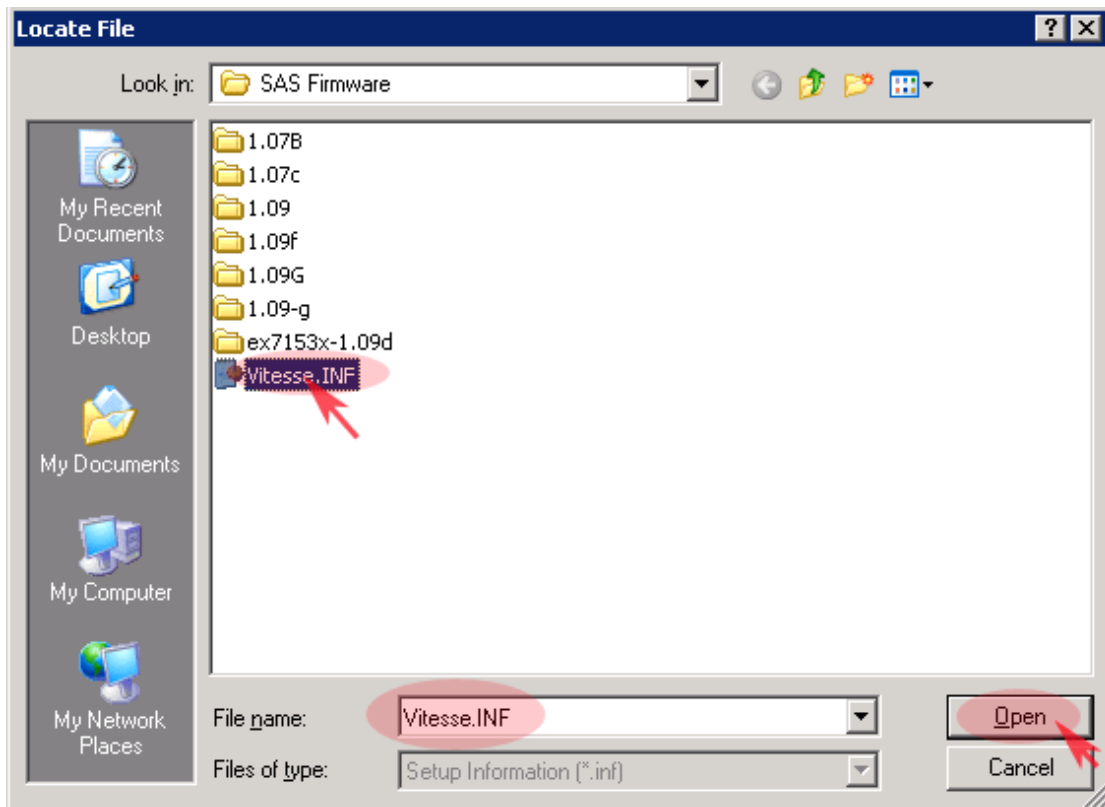


[Tell me why driver signing is important](#)

< Back

Next >

Cancel



Hardware Update Wizard

Select the device driver you want to install for this hardware.



Select the manufacturer and model of your hardware device and then click Next. If you have a disk that contains the driver you want to install, click Have Disk.

Model
Vitesse Eval Brd SAS Expander



This driver is not digitally signed!

[Tell me why driver signing is important](#)

Have Disk...

< Back

Next >

Cancel

Update Driver Warning



Installing this device driver is not recommended because Windows cannot verify that it is compatible with your hardware. If the driver is not compatible, your hardware will not work correctly and your computer might become unstable or stop working completely. Do you want to continue installing this driver?

Yes

No

Hardware Installation



The software you are installing for this hardware:

Vitesse Eval Brd SAS Expander

has not passed Windows Logo testing to verify its compatibility with this version of Windows. [\[Tell me why this testing is important\]](#)

Continuing your installation of this software may impair or destabilize the correct operation of your system either immediately or in the future. Microsoft strongly recommends that you stop this installation now and contact the hardware vendor for software that has passed Windows Logo testing.

Continue Anyway

STOP Installation

