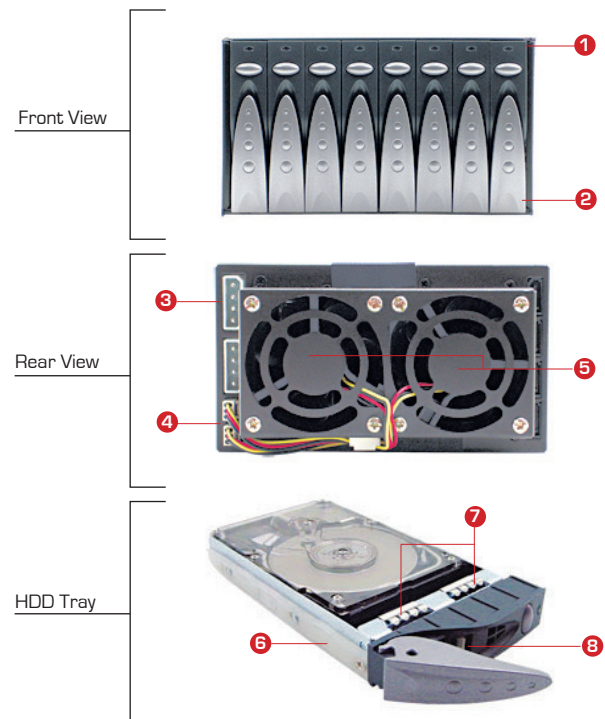


XC-28-2



Model Number : XC-28-2		Temperature : 0°C(32°F) ~ 50°C(122°F)	
Order Information : XC-28-■-2		Humidity : 5%~95% non-condensing	
Materials : Heavy-duty cold-rolled steel		Net Weight : 1 kg / 2.2 lbs	
Finish :	Zinc-plated with black chromate	Cubic Feet : 0.3	
Dimensions :	mm : 146 x 192.5 x 83.8	Packaging Dimension (W x D x H) :	
W x D x H	inches : 5.75 x 7.6 x 3.3	mm : 270 x 220 x 150	
Cooling :	Rear : 2 x 60x25mm fans	Backplane :	
Indicators : HDD LED's		■	Description
Drive Bay:	3.5" hot-swap 8	SC3	Parallel SCSI U320
		SA1S	SAS 3.0 (Single Expander)
		SA1D	SAS 3.0 (Dual Expander)



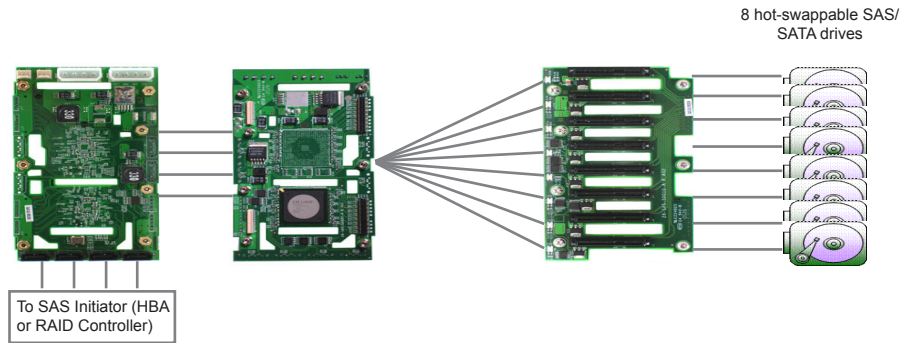
Features & Benefits

- 1 LED for hard drive status - solid blue as power, blinking blue as activity & solid red as failure
- 2 Sleek, unique and user-friendly HDD tray design
- 3 2x 4-pin power connectors (for 8x HDD)
- 4 2x 3-pin fan connectors
- 5 2x 60mm self-contained cooling fans
- 6 Plastic rail for hard drive vibration damping
- 7 EMI shielding gasket for EMI grounding
- 8 Innovative airflow design for optimized cooling

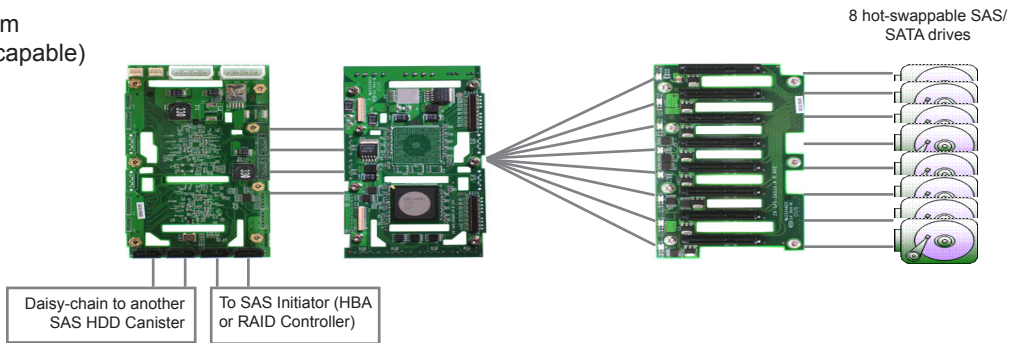


SAS Diagram

■ 4 Upstream Connections



■ 2 Upstream + 2 Downstream Connections (Daisy-chain capable)



Mechanical Drawing

